

Q.1. (A) Choose the *correct* alternative from the given options. [5]

- i. Bones contain _____ amino acid.
 - a. melanin
 - b. haemoglobin
 - c. ossein
 - d. insulin
- ii. Giant squirrel is an example of _____ threatened species.
 - a. endangered
 - b. rare
 - c. vulnerable
 - d. indeterminate
- iii. Human being belongs to _____ class.
 - a. Mammalia
 - b. Amphibia
 - c. Reptilia
 - d. Cyclostomata
- iv. Organs like _____ can be donated after death.
 - a. skin
 - b. heart
 - c. lungs
 - d. bones
- v. Volcano is a _____ disaster.
 - a. social
 - b. political
 - c. biological
 - d. geological

(B) Answer the following:**[5]**

- i. Find the odd one out :
Earthquake, Flooding, Tsunami, War.
- ii. State true or false:
Oxidation of proteins is carried out in aerobic respiration.
- iii. Complete the correlation :
Western Ghat : Asiatic Lion : : Sunderban sanctuary :

- iv. Which type of fuel is used in thermal power plant?
- v. Identify the picture and name it.

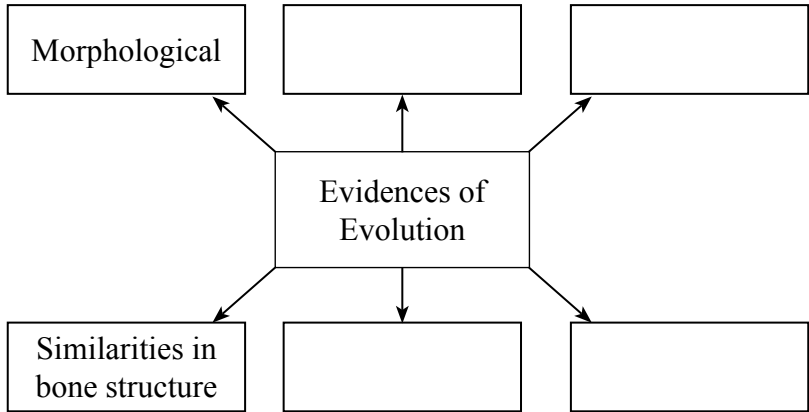


Q.2. (A) Give scientific reasons. (Any two) [4]

- i. Cell division is one of the important properties of cell and organisms.
- ii. Cockroach belongs to phylum Arthropoda.
- iii. Power generation plant based on natural gas is eco-friendly.

(B) Answer the following questions. (Any three) [6]

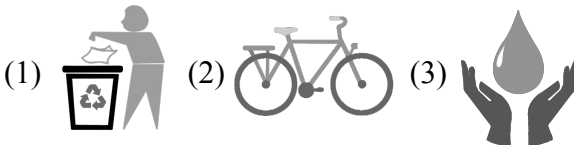
- i. Complete the following diagram :



- ii. What do we learn from the story of Jadav Molai Payeng?
- iii. Distinguish between sexual reproduction and asexual reproduction. (*two points*)
- iv. Define genetically modified crops and give any two examples.
- v. What are vitamins? Write two types of vitamins.

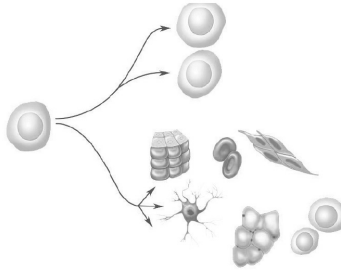
Q.3. Answer the following (Any five) [15]

- i. Explain the meaning of the following symbols:

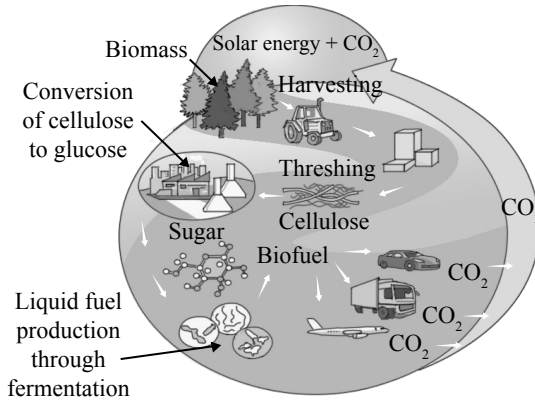


- ii. Write any *three* characteristics of class reptilia.
- iii.
 - a. Which substance is used to produce cheese?
 - b. Which enzyme was used earlier for cheese production?
 - c. Which enzyme is used to produce vegetarian cheese?

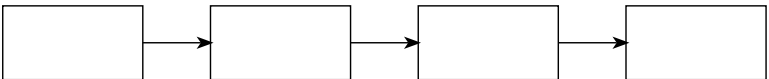
- iv. a. Which process is shown in the given diagram?
 b. What is the importance of this process?
 c. Which organs can be transplanted by this process?



- v. What is meant by disaster? Write any *two* examples of each natural and man-made disaster.
 vi. Write the objections raised against Darwin's theory of natural selection.
 vii.



- a. Which process is shown in the above given picture?
 b. Give two examples for liquid fuels and solid fuels obtained by this process.
- viii. a. Complete the stages in electric generator using wind energy.



- b. Write the limitations in an electric generator using wind energy.

Q.4. Answer any *one* of the following:

[5]

- i.
 - a. Sketch and label the essential and accessory whorls of flower.
 - b. What is pollination?
 - c. Give any two examples of agents of pollination.
- ii. What will you do?
 - a. You are spending more time on internet.
 - b. Child of your neighbour is addicted to tobacco chewing.
 - c. Your sister has become incommunicative.
 - d. You have to use free space around your home for good purpose.
 - e. Your brother studying in XII has developed the stress.

★★★